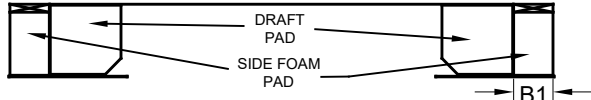
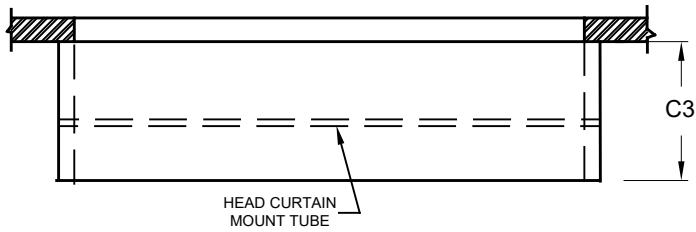
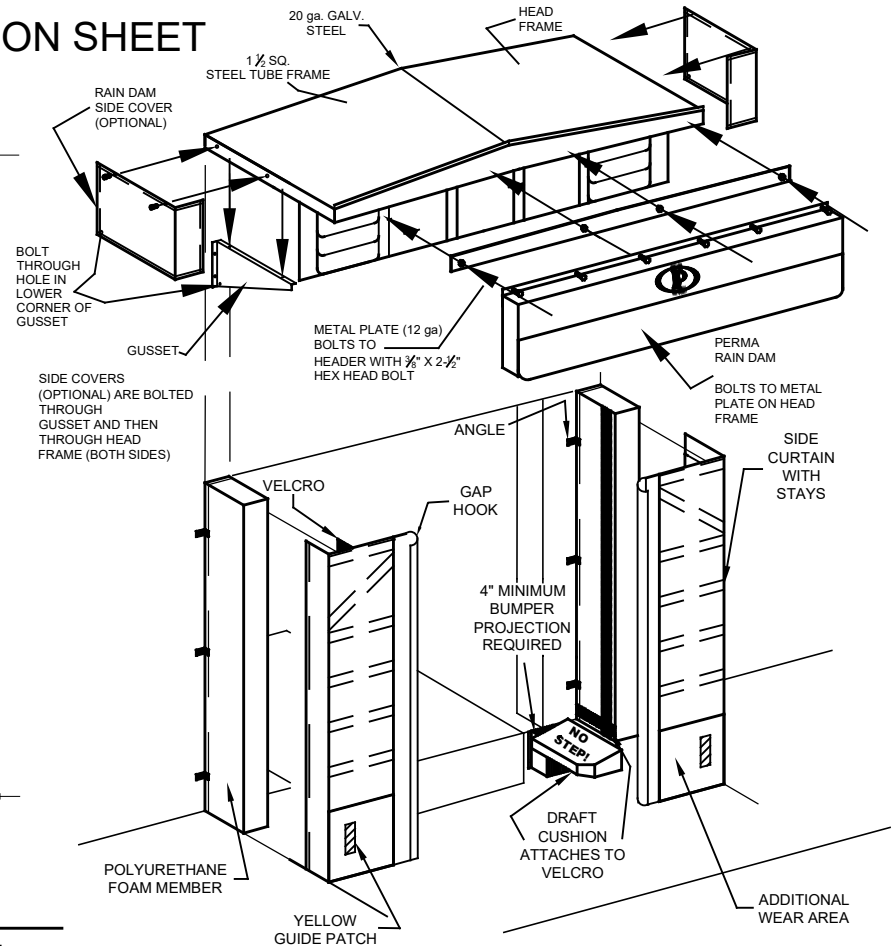
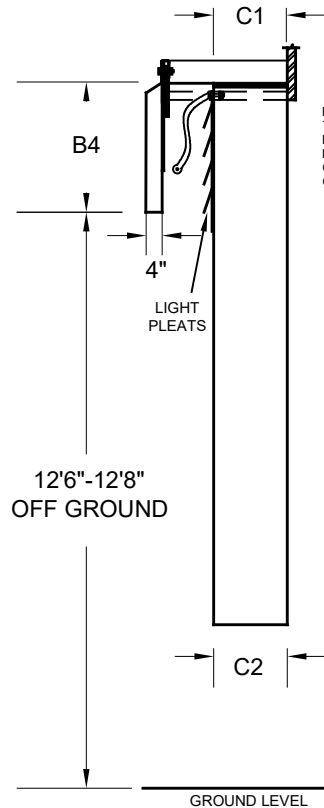
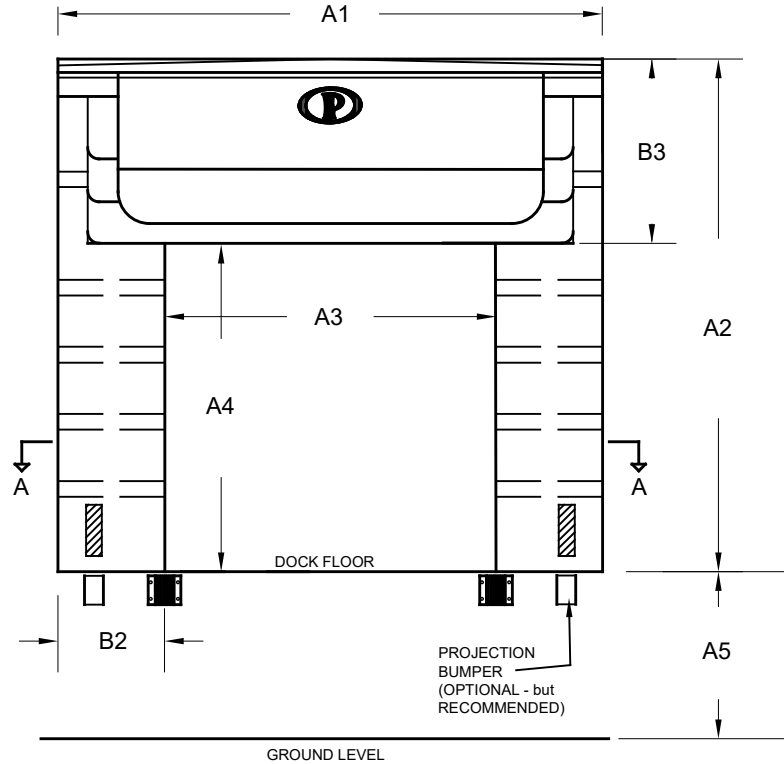


PS90 ULTRA DARK - SOFT SIDED SHELTER SPECIFICATION SHEET



SECTION A-A



DIMENSIONS:

- A1 - _____ " UNIT WIDTH
- A2 - _____ " UNIT HEIGHT
- A3 - _____ " OPENING WIDTH
- A4 - _____ " OPENING HEIGHT
- A5 - _____ " DOCK HEIGHT
- B1 - _____ " SIDE PAD WIDTH
- B2 - _____ " SIDE CURTAIN WIDTH
- B3 - _____ " HEAD CURTAIN HEIGHT
- B4 - _____ " RAIN DAM HEIGHT
- C1 - _____ " TOP PROJ.
- C2 - _____ " BOTTOM PROJ.
- C3 - _____ " RAIN DAM PROJ.

GENERAL INFO:

QUANTITY: _____, PART #: **PS90-22HT-V-UD**
 MODEL: **ULTRA DARK**, BUMPER PROJ: _____
 DOOR SIZE: _____ " WIDTH, _____ " HEIGHT
 SIDE PAD FABRIC: _____, COLOR: _____
 FACE FABRIC: _____, COLOR: _____
 APPROACH: LEVEL DECLINE INCLINE
 DIFFERENCE IN 50'-0"

OPTIONS:

- VELCRO SLIT: _____ " HEIGHT
- 3 ROPE PULL UP
- SUPPORT FRAME: WOOD STEEL



PERMA TECH, INC.

363 HAMBURG STREET • BUFFALO, NY 14204
 (716) 854-0707 • 1-800-DOC-SEAL
www.permatechinc.com

JOB: _____

SPECIAL INFORMATION

DEALER:	DATE:	
CONTACT:	QUOTE #:	
APPROVED BY SIGNATURE:	DRAWN BY: J.ZERNICKEL	DATE: 4/22/2020